

ADINE – EU DEMONSTRATION PROJECT OF ACTIVE DISTRIBUTION NETWORK

Sami Repo
Tampere University of Technology
Finland

Distributed Generation – DG

- Increased DG penetration is expected
 - New products
 - New connection standards
- Advantages
 - Many use renewable energy sources
 - May relieve network
 - Island operation may reduce interruption time
- Challenges
 - Network operation and DG interact
 - Exploit communication for control
 - New view on DG needed – DG offers new possibilities



Active network a solution

Passive network until now

- Flexibility comes from network capacity
- Network itself may handle all probable loading conditions
- Investments are in lines, cables, transformers and switchgear

Active network

- Flexibility comes from use of controllable resources
- Investments are in controllability and information and telecommunication technologies
- Require integration of DG units instead of "fit & forget"
- Synergy effects from co-operation of individual controllable resources

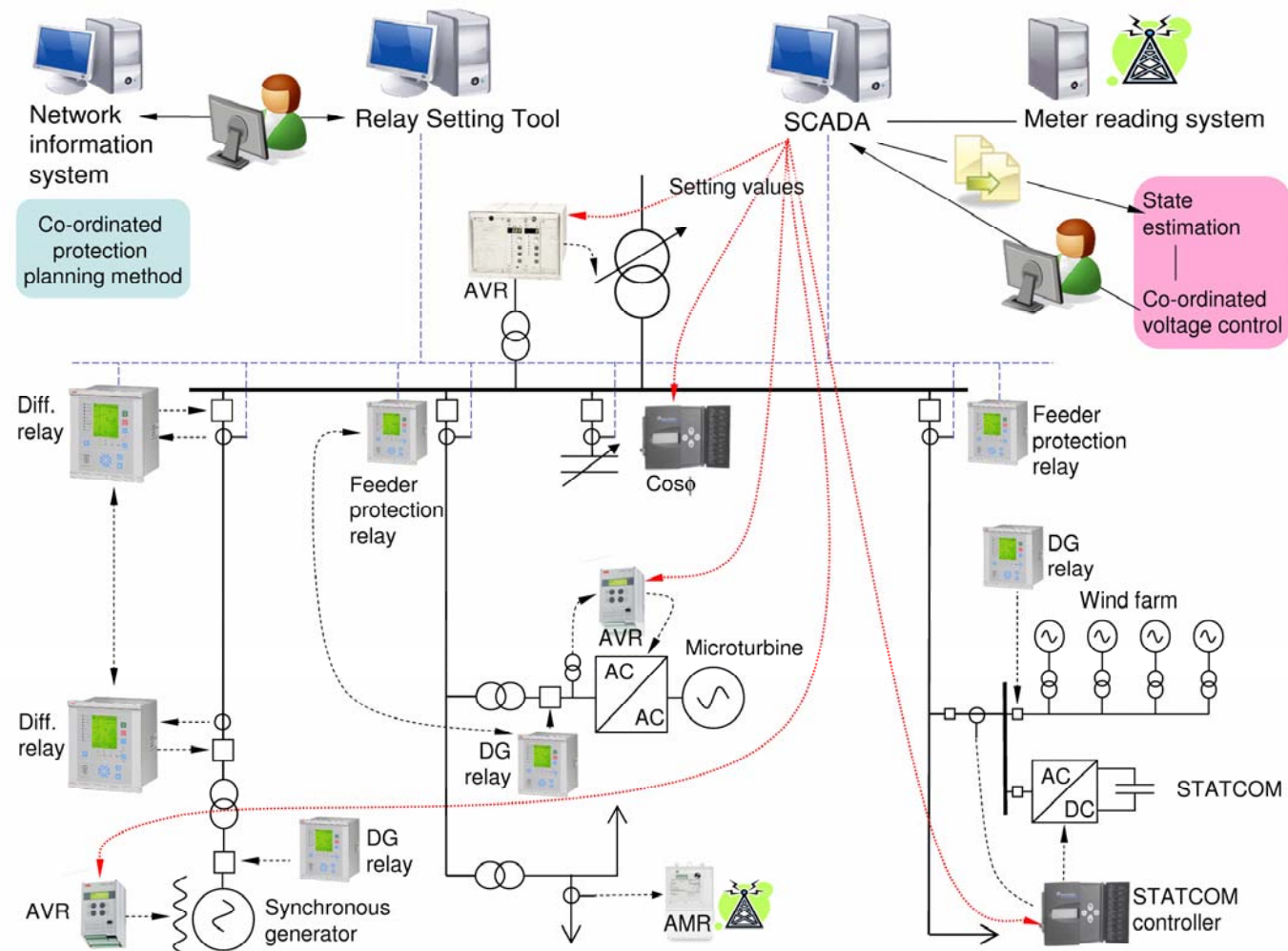
Goals of Active Network Management – ANM

- Ensure safe network operation in networks with DG
- Increase network reliability in networks with DG
- Maximize the use of the existing networks with bottlenecks caused by voltage issues
- Maintain the required level of power quality despite non-predictable power production or consumption

Objective of ADINE

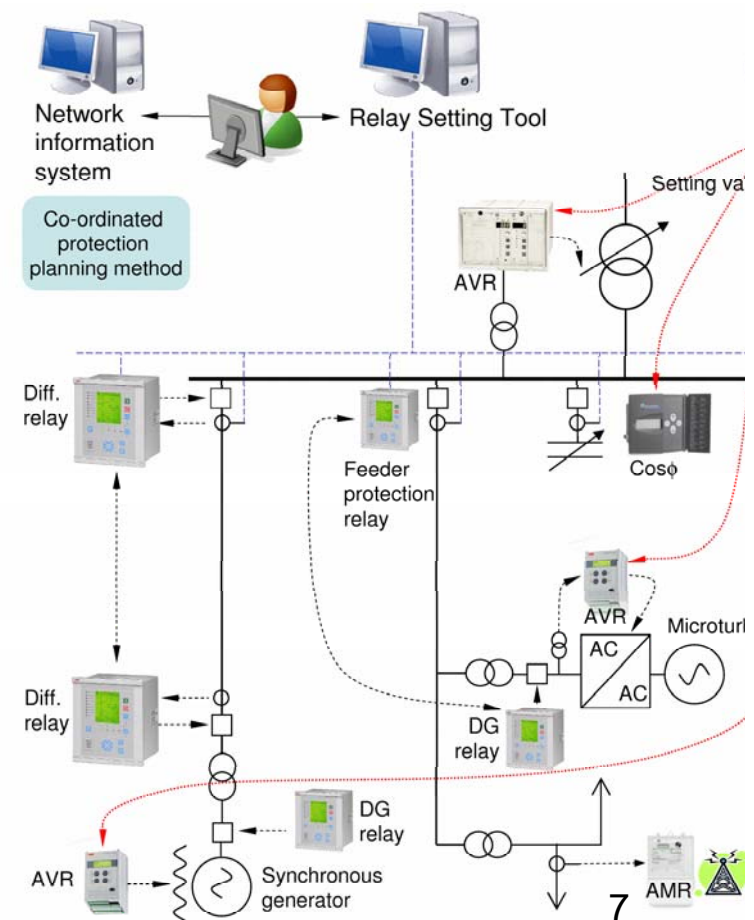
- To develop, demonstrate and validate ANM
 - distribution network including DG and other active devices
 - to enable an easy connection of DG units
- Develop a set of technical solutions
- Demonstrate in real-life environment
- Validate combination of solutions through simulations

The full picture



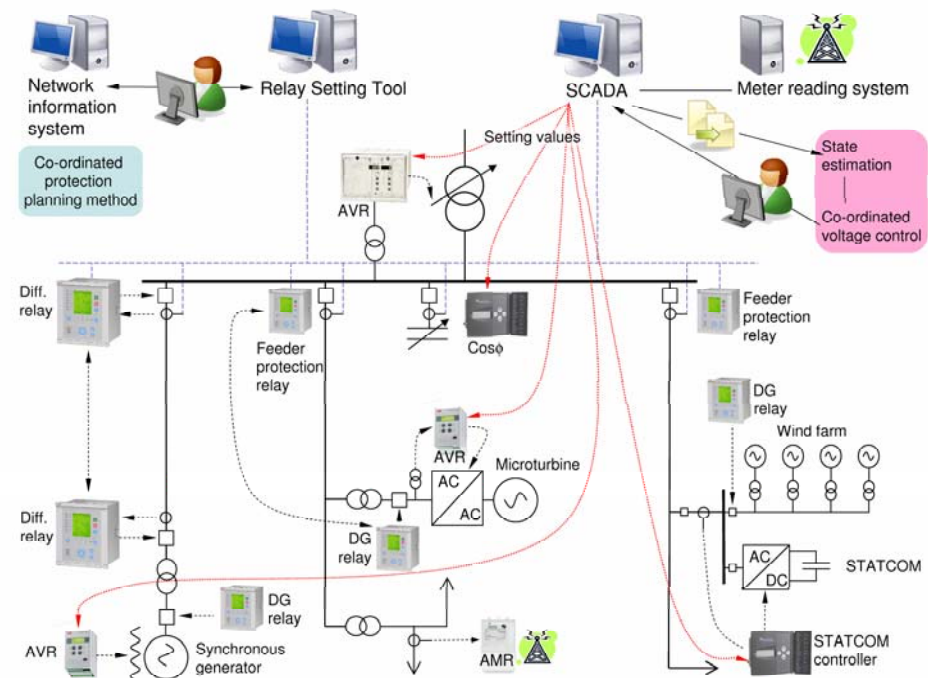
Protection of distribution networks with DG

- Protection is a critical issue for DG integration
- Non-directional over-current relays not sufficient
 - Communication based relays a solution
- Fault location disturbed by DG
 - New method taking DG influence into account
- Manual protection planning needs to be minimized
 - Co-ordinated planning in Network Information System



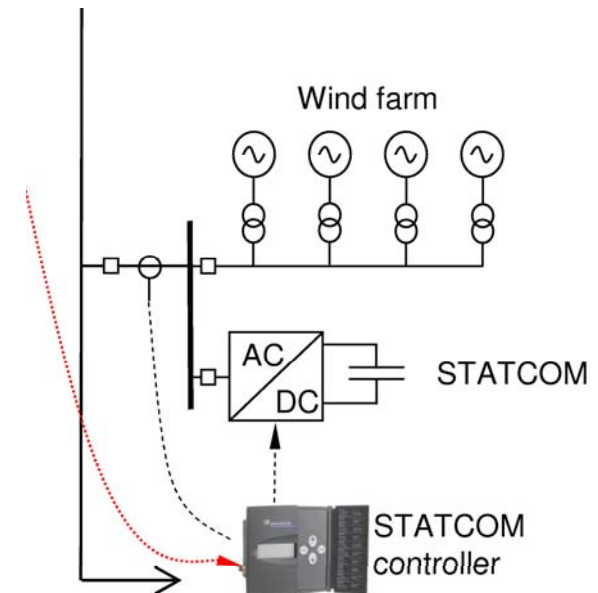
Voltage control of networks with DG

- DG affects voltage regulation by violating basic assumptions
- Local control of DG units
 - Control of reactive output
- Centralised voltage control
 - Co-ordinate all devices
 - SCADA/DMS software
 - Manage network losses, reactive compensation



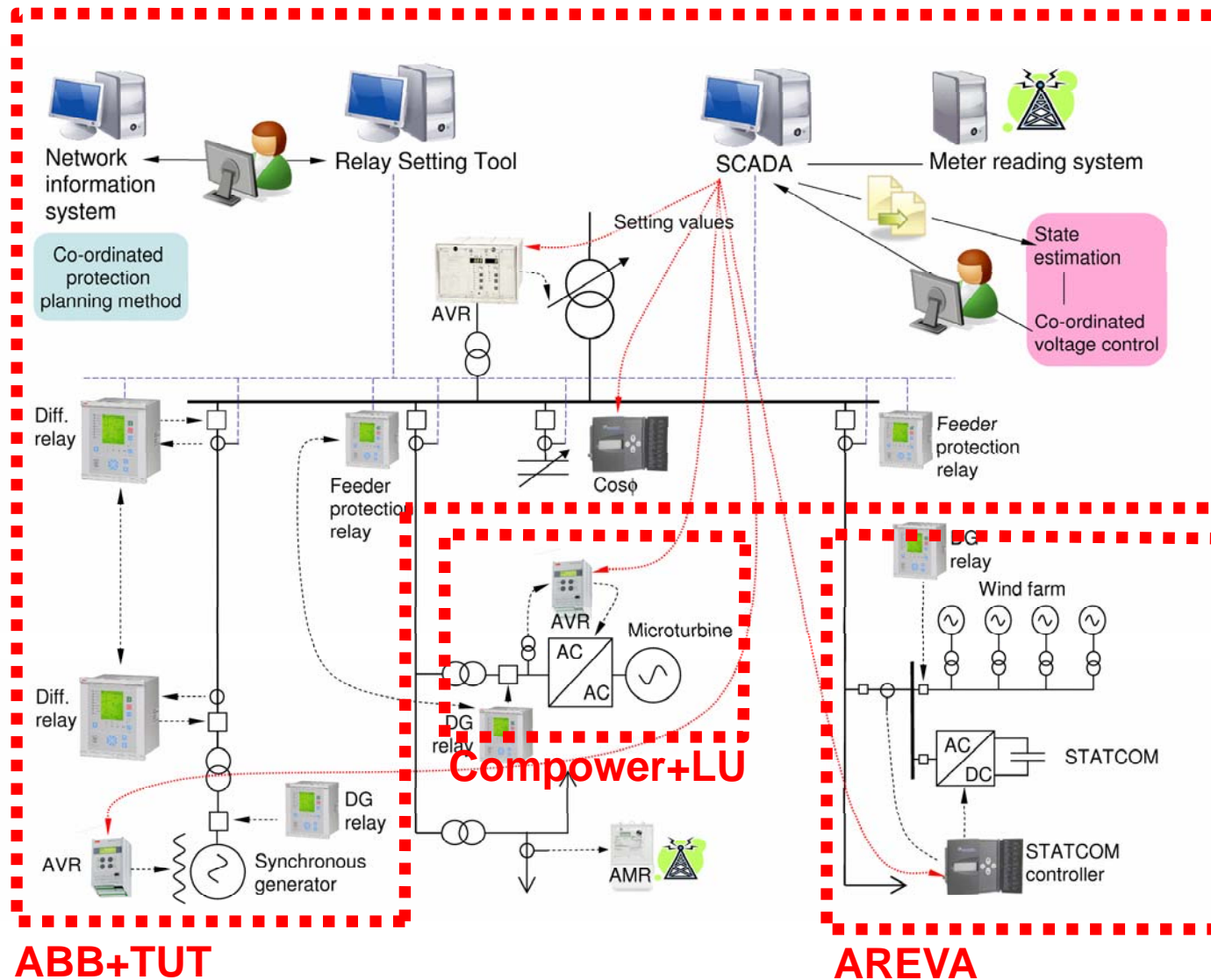
New generation medium voltage STATCOM

- DG affects power quality
- STATCOM can act in many time-scales
 - Filtering harmonics, eliminating flicker
 - Voltage dip mitigation
 - Reactive power compensation
 - Voltage regulation

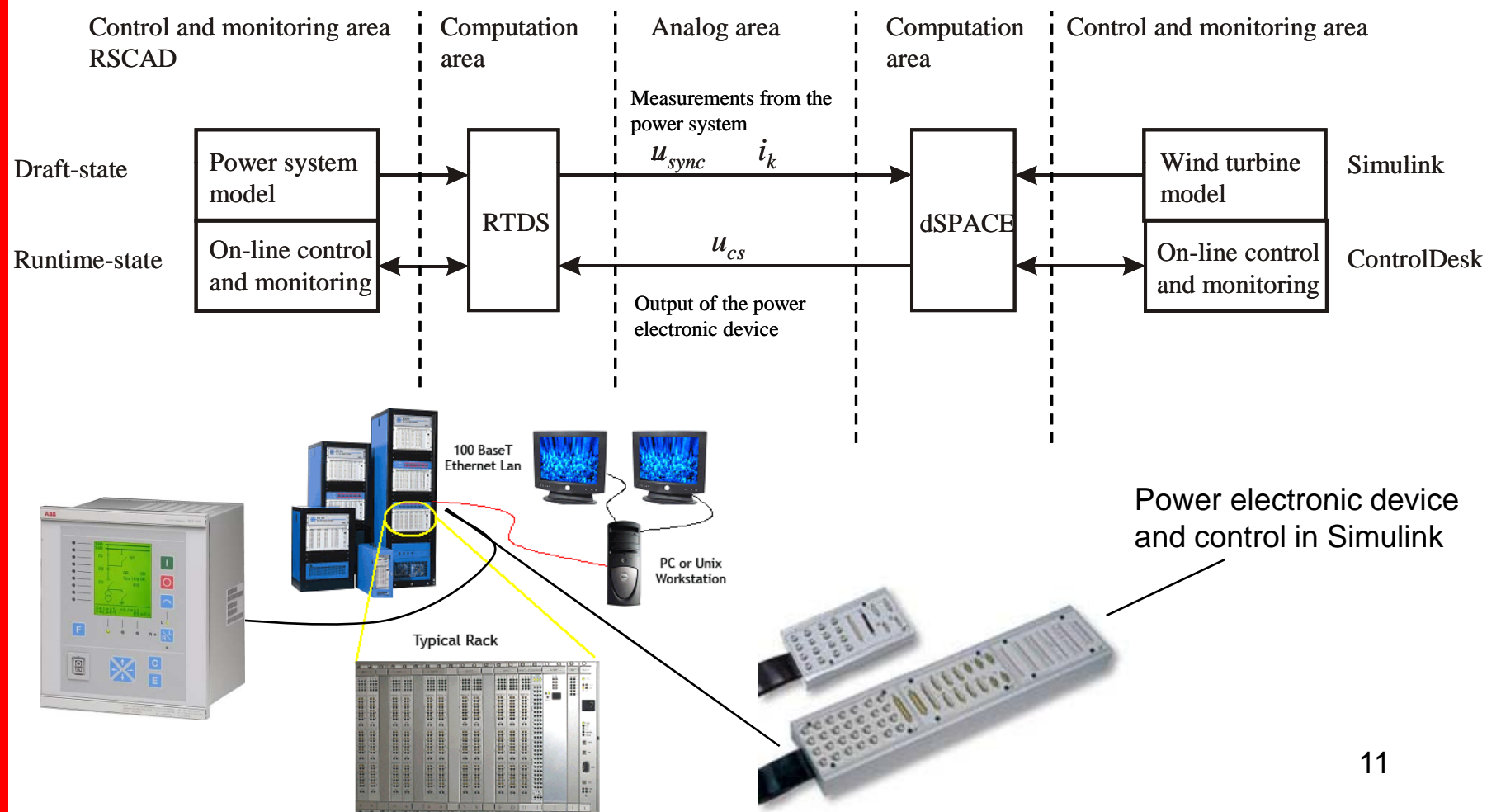


Test sites

- Simulations and measurements of individual solutions



Real-time simulations in RTDS/dSPACE



Summary of ADINE project

- Active Network Management method
- Technical solutions
 - Protection
 - Voltage control
 - Power quality
- Individual assessment of technical solutions
 - Simulations
 - Field tests
- Interaction simulations
 - Real-time environment with dSPACE and RTDS
- Final report by end of 2010