



Smart Water Heater Project Update

EPRI Smart Grid Advisory Meeting
Albuquerque, New Mexico

October 13, 2009



1



Residential Two-way Water Heater Load Control Pilot

Purpose

- Demonstrate a two-way water heater load control system
- Shift peak load minimizing customer impact
- Capture operational data and usage profiles to support Measurement & Verification

Project participants

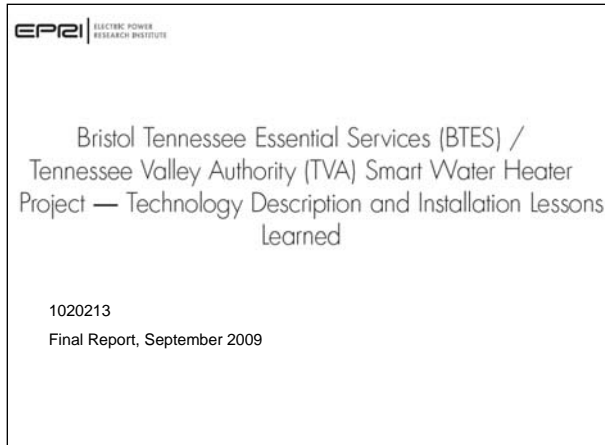
- Bristol Essential Services (BTES) including BTES selected water heater program customers
- Carina Technology, Inc. (Communications, AMI, and controls development)
- EPRI (Project analysis and evaluation)
- TVA (Project development and management)

2



Technical Report Available

Report 1020213, available to members for download

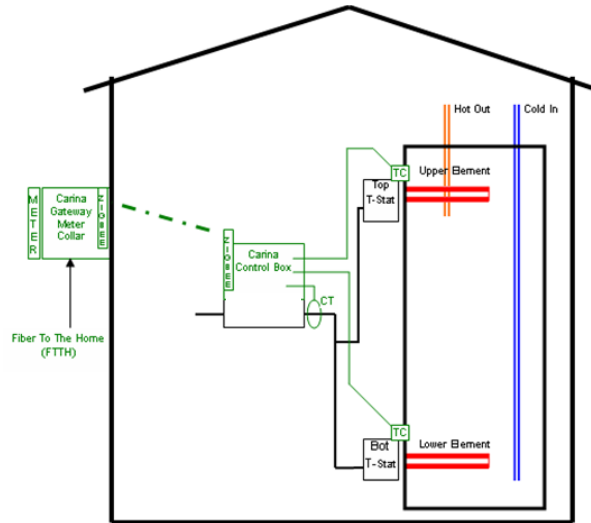


Residential Water Heater Controller Development – Project Phases

- Phase I - Alpha version controller – 25 units
- Phase II - Beta 1.0 units – 250 units
 - gather demographic and baseline “comfort” data, develop a plan to test Load Control Schemes, analyzing preliminary data
- Phase III – Beta 2.0 units - testing of 5000 units
 - develop seasonal data and baseline data
 - validate actual peak shifting,
 - fine tune Load Control Schemes for various demographic user groups
 - obtain third-party analysis and validation,



System Installation



5

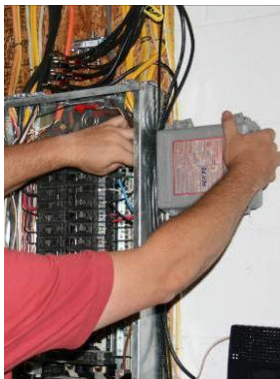


All Installs were Retrofits

Existing AMI System, Remove 1-way WH System, Install 2-way WISE Unit



Install ZigBee Module



Remove one-way
Control Device



Install WISE Unit

6



System Hardware



Communications Box
(Optical Network Terminal)



Meter Collar



Meter: L&G Focus



Water Heater Information
Solution (WISE) Unit



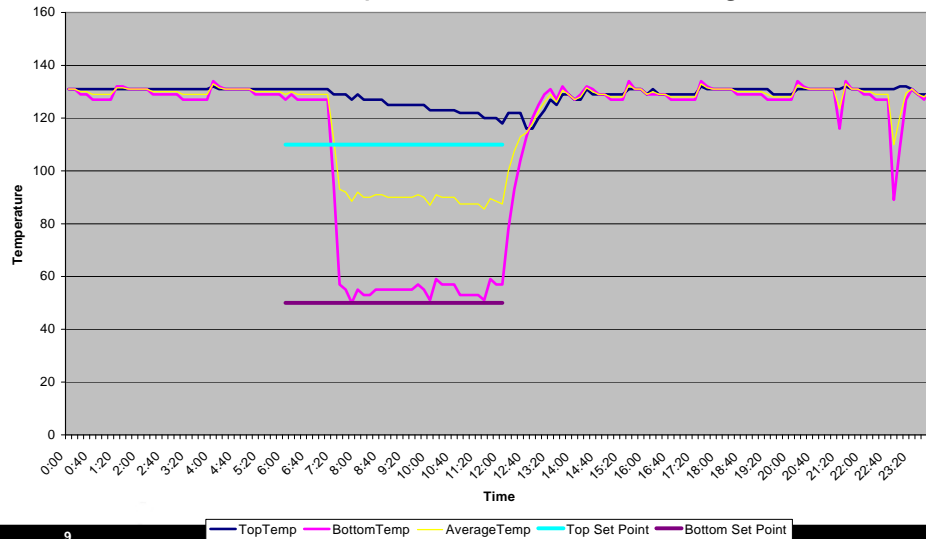
Installation Lessons Learned

- ~4 Installations per day per installer (Retrofit)
- Average install time ~1 hour (all from 1/2 hour – 3 hour)
- BTES' strong relationship with customers – invaluable
- Installation schedule & management very important
- Training & Staging critical to reduce install time
- No issues with ZigBee wireless connection
- Considering Pre-Install Walkthru
- Thermocouple Routing (Outside vs. Inside)
- End-to-End Verification Bottlenecks

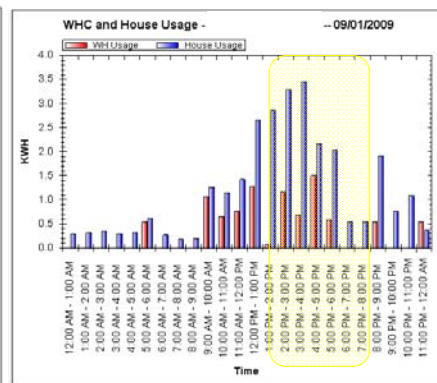
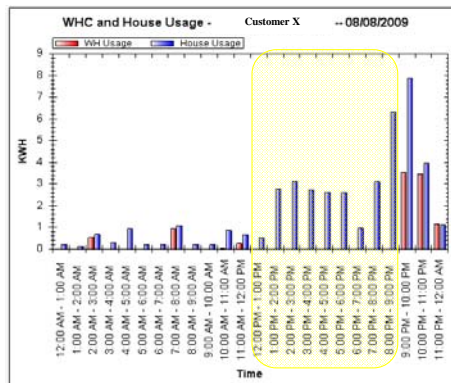


Water Heater Control Example

Shift as much load as possible without causing discomfort



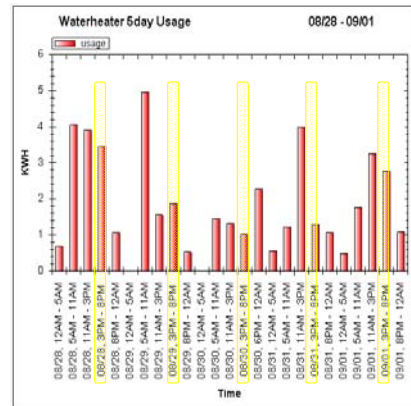
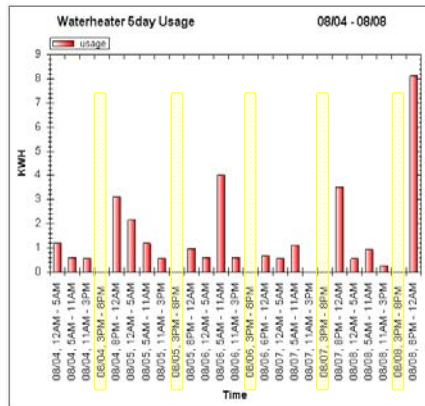
Controlled vs. Non-Controlled Mode Water Heater & House kWh



*Note: Not a controlled data set, but from same customer



Controlled vs. Non-Controlled Mode Water Heater & House kWh. 5-Day

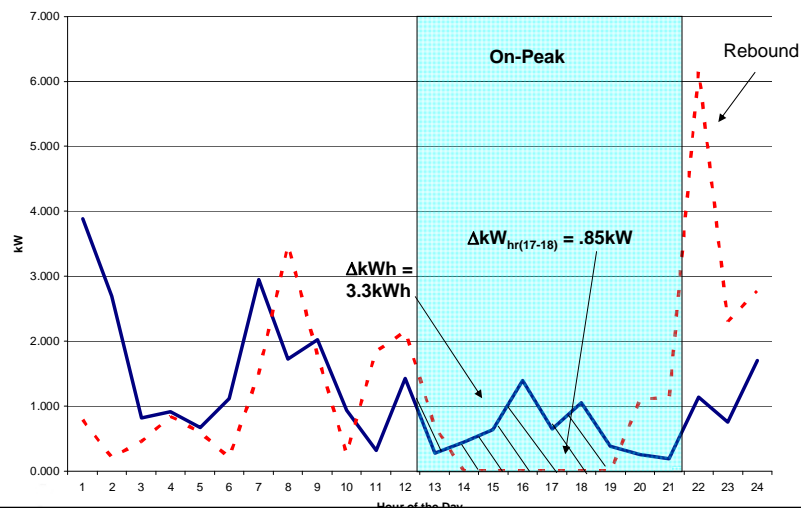


*Note: Not a controlled data set, but from same customer



Water Heater Load Shape Impacts – Thursday, August 27, 2009

Actual BTES Water Heater Load Shape @ 110 ° Control





Water Heater Data Interactions

1. Type of dwelling (3)
2. WH Capacity (GAL) (3)
3. Clothes Washer? (2)
4. Dishwasher? (2)
5. # of persons in household (5)
 - a) Ages: 0-5
 - b) Ages 6-13
 - c) Ages 14 -18
 - d) Ages 18 - 65
 - e) Ages over 65

Initial stratifications suggests 190 stratification cells. Total sample size would need to be far in excess of expected 250 sites in the initial evaluation

Source: "Modeling Patterns of Hot Water Use in Households", Lutz et al., Ernest Orlando Lawrence Berkeley National Laboratory, November 1996

- Customer Satisfaction = $f(\text{draw } ^\circ)$
- Utility value = $f(\text{shifted kWh})$ less rebound
- Shifted kWh = $f(\text{usage, script})$
- Usage = $f(\text{\# people, their ages, dishwasher, washer, ownership})$
- Draw $^\circ$ = $f(\text{usage, WH Capacity, recovery time, script, script duration})$

Exogenous Variables

- Usage

Control Variables

- Script
- Script duration

Proposed Scripts

- 120 $^\circ$
- 110 $^\circ$
- 105 $^\circ$

13



Final BTES Summer '09 Stratification

Number of Monitored Sites = 117

(Sites per Cell / Control Sites in "()")

		Sites w/ Dishwasher		Sites w/o Dishwasher	
		No Seniors	Seniors	No Seniors	Seniors
Occupants	1-3	50 (24)	20 (9)	13 (4)	6 (3)
	4 or more	20 (10)	0	8 (4)	0

14



Satisfaction Survey

- Weekly Survey – How satisfied were they with the quantity of hot water delivered when needed
- Points awarded based on timeliness of survey completion
 - Awarded \$25 or \$50 gift card based on points
 - Points applied towards entry for a grand-prize: Flat Screen HDTV

Satisfaction Rating: 4.64 (1-5, 5 being best)

Email response rate was 67.9% over the five week trial.



Customer Surveys

Sample of Customer Comments:

- We did lose hot water on a Sunday Morning - after all family had showers
- I am really pleased to be part of your new monitoring system. I think it is a great way to manage water heaters
- It is taking longer to get hot water and with new baby this is NOT convenient
- Our water heats up quickly and do not have to worry about running out.
- We love the hot water heater, any time we need hot water we don't wait which is wonderful
- Water is too HOT!



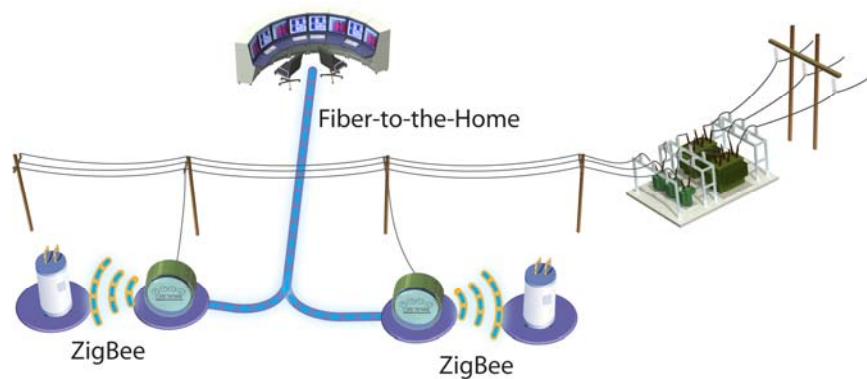
Next Steps

- Full scale impact assessment planned for coming winter and following summer
- Interim report on load shifting impacts for summer '09 and review of rebound impacts
- Summer Pilot Results will help refine stratification
- Review of rebound effects and test of potential mitigation strategies
- Other Tech Transfer Requests?
 - Webcast on interim summer results?
 - Webcast on Technology Details (Carina, BTES, TVA, EPRI)
 - Other?

17



Questions?



18